



# Get the Most Out of Workday with JDXpert



Emerging  
Partner

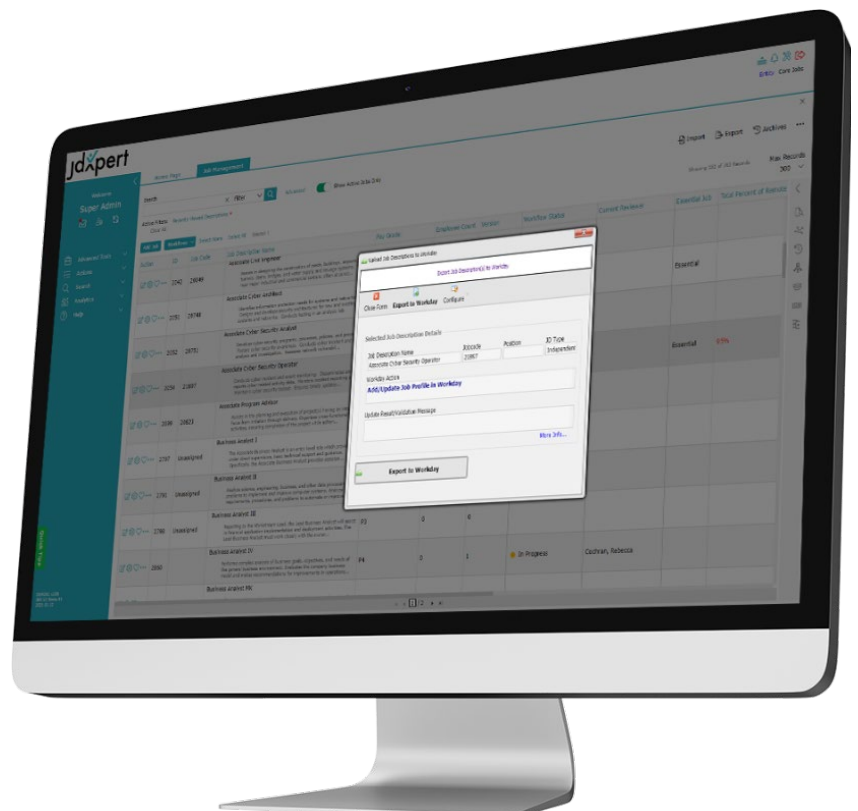
Do you have trouble populating your Job Profiles and Position descriptions in Workday with relevant, accurate, and up to date job information? And when you need to audit that information, what tool or processes do you use? If you're still editing and maintaining your job descriptions in Word via email or insufficient job builders, then your job descriptions may be missing critical data about those jobs.

JDXpert, a leader in job description software, allows you to bring structure and efficiencies to the way you construct, manage, and store job information.

- Extensive content library
- Flexible collaboration
- Configurable templates
- Advanced role-based security
- Archive/advanced versioning
- Integration friendly

Not only can you automate your job description management process, but you can also exchange valuable job information between JDXpert and Workday. That's right, JDXpert integrates with Workday and is also an Emerging Workday Partner.

Our powerful integration tools, which are based on the native Workday EIB format, allow you to extract and transfer data from your JDXpert job descriptions and return it to Workday in batch mode or real-time.



JDXpert lets you populate all Workday job profile elements, including:

- Job Classifications
- Pay Rates
- Exempt Data
- Workers Compensation Code
- Qualifications
- Responsibilities
- Work Experience
- Education
- Skills and more

JDXpert offers bi-directional web-service integration, which means you can instantly sync data between systems. You can also use traditional file transfers using the Workday EIB format.

If you are using Position Management in Workday, you can also use JDXpert to accurately define your positions and automatically cascade your job profile content to the position definitions.

No matter how you slice it, JDXpert can help you get the most out of Workday by delivering valuable job data to a system that revolutionizes human capital enablement.

If you're a Workday customer and would like to learn more about JDXpert and its ability to integrate with Workday, [contact us today](#).

